

Model 140K

Diaphragm Seals for Threaded Off-Line Process Connections All Welded - Gasketless Design

Process Connection Sizes
1/4" NPTF or 1/2" NPTF

Maximum Working Pressure

2000 PSIG (13.80 MPa) @ 100°F (38°C) Standard
5000 PSIG (34.50 MPa) @ 100°F (38°C) Optional

Dimensional Data

See drawings below

Standard Features and Options

This threaded connection, off-line seal is an all welded, gasketless design. The diaphragm and lower material offerings are 316 Stainless Steel, Hastelloy, Carpenter 20 and Monel. The displacement capability of this series of diaphragm seal is 0.02 cubic inches utilizing a 1.375" (34.92mm) diameter diaphragm. Due to the limited displacement capability of this series, gauges with dial sizes no larger than 3 1/2" (88.90mm) having bourdon tube ranges no lower than 0-100 PSIG (0.69 MPa) are applicable to this series of seal. The standard pressure rating is 2000 PSIG (13.80 MPa) with an optional offering of 5000 PSIG (34.50 MPa). 1/8" NPTF or 1/4" NPTF flushing ports are optional.

Offerings

Lower Materials: 316 Stainless Steel, Hastelloy C-276, Hastelloy B3, Carpenter 20 and Monel

Upper Materials: 316 Stainless Steel, Carpenter 20 and Monel (See Note below)

Diaphragm Materials: 316 Stainless Steel, Hastelloy C-276, Hastelloy B3, Carpenter 20 and Monel

Note: Upper materials are not available in carbon steel. When a Carpenter 20 or Monel diaphragm are required, the upper housing must be Carpenter 20 or Monel.

CONTROL ENGINEERING DATA

B5 C2 2 4 B S N

- (9) **FILL LIQUID**
N = (Standard)
- (8) **UPPER HOUSING MATERIAL (See Note 1)**
C = Carpenter 20 CB-3
M = Monel 400
S = 316 Stainless Steel
- (7) **SEAL DIAPHRAGM MATERIAL (See Note 1)**
D = Carpenter 20 CB-3
B = Hastelloy B3
C = Hastelloy C-276
M = Monel 400
S = 316L Stainless Steel
- (6) **SEAL INSTRUMENT CONNECTION**
3 = 1/4" NPTF with bleed
4 = 1/2" NPTF with bleed
- (5) **SEAL PROCESS CONNECTION WITHOUT FLUSHING PORT (FEMALE)**
1 = 1/4" NPTF - NO FLUSH PORT
2 = 1/2" NPTF - NO FLUSH PORT
7 = 1/8" NPTF - NO FLUSH PORT
- SEAL PROCESS CONNECTION WITH FLUSHING PORT (FEMALE)**
3 = 1/4" NPTF With 1/8" NPTF Flushing Port
4 = 1/4" NPTF With 1/4" NPTF Flushing Port
5 = 1/2" NPTF With 1/8" NPTF Flushing Port
6 = 1/2" NPTF With 1/4" NPTF Flushing Port
- (3-4) **LOWER HOUSING MATERIAL**
C2 = Carpenter 20 CB-3
HB = Hastelloy B3
HC = Hastelloy C-276
M4 = Monel 400
S6 = 316 Stainless Steel

(1-2) DIAPHRAGM SEAL DESIGN AND PRESSURE RATING

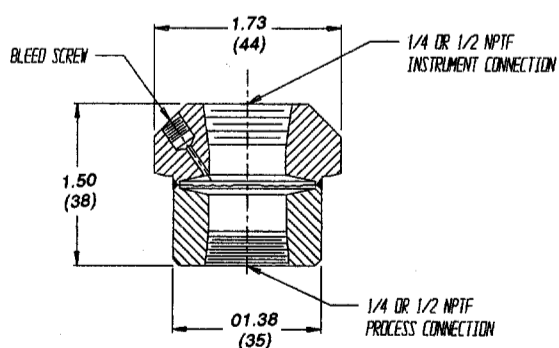
B1 = 140K- Threaded Off-Line (2000 PSIG [13.80 MPa] Rated) @ 100°F (38°C)
B5 = 140K- Threaded Off Line (5000 PSIG [34.50 MPa] Rated) @ 100°F (38°C)

Notes:

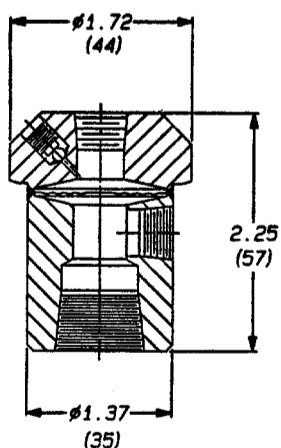
1. When a Carpenter 20 or Monel diaphragm is required, the upper housing will be Carpenter 20 or Monel.
2. N.A.C.E. - Welded diaphragm seals with Hastelloy C-276 or Monel wetted materials of construction will meet the requirements of N.A.C.E. International Document MR-0175-1995. **316 Stainless Steel construction will NOT BE offered in a welded design as meeting N.A.C.E. MR-0175-1995 requirements as the weld area of the diaphragm seal will not meet the maximum hardness specifications within this document.**

CATALOG NUMBERS AS RECEIVED FOR THE 140K SERIES MUST CONTAIN NINE (9) CHARACTERS.

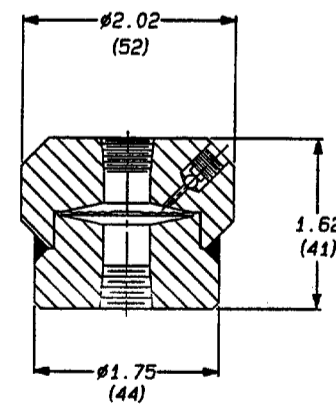
() Dimensions in millimeters



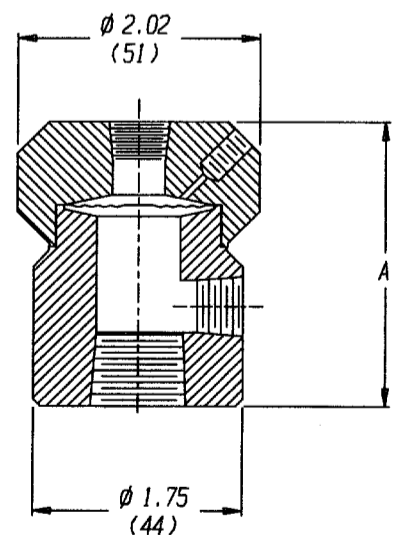
140K SERIES



140KF SERIES



140K SERIES
5000 PSIG (34.50MPa)



140KF SERIES
5000 PSIG (34.50MPa)

