



ENGINEERED FOR LIFE

Conoflow

Conoflow® Series GT25/GT45/GT65 IEEE Qualified I/P Transducer

Conoflow's IEEE Qualified I/P Transducers have been qualified in accordance with the requirements of IEEE 323-1974 and the recommended practices of IEEE 344-1975. The test program Thermal Aging, Radiation Aging, Wear Aging, Seismic Qualification and Steam Line Break Testing. For details of test conditions, consult the factory.

Standard Specifications

Input Range: 4-20 mA DC, 10-50 mA DC
Output Signal: 3-15, 3-27, or 6-30 PSIG (21-103, 21-186, or 41-207 kPa)
Nominal Input Impedance: 580 Ohms (4-20 mA DC) or 235 Ohms (10-50 mA DC)
Required Regulated Air Supply Pressure:
 25 PSIG (172 kPa) for 3-15 PSIG
 35 PSIG (241 kPa) for 3-27 (21-186 kPa) and 6-30 PSIG (41-207 kPa) units.
 Filtered Air Supply – Units equipped with a GFH25XT1767F Airpak®, Filter-Regulator
Air Consumption (Maximum): 0.20 scfm (0.006 m³/min) for GT25. 0.30 scfm (0.009 m³/min) for GT45 / GT65 models.
Air Delivery Rate (Maximum): 5 SCFM (0.142 m³/min)
Exhaust Rate (Maximum): 3 SCFM (0.142 m³/min)
Linearity: ± 1.5% of output span
Temperature Effect: 0.25% of output span per °F
Ambient Temperature: 0°F to + 150°F (-18°C to + 66°C)
Approximate Shipping Weight: 12.5 lbs (5.44 Kg)
Minimum (Output) Piping Requirements: 3/8" tubing or 1/4" pipe

MATERIALS OF CONSTRUCTION

Housing: Zinc Alloy Housing
Elastomers: Viton
Printed Circuit Board: Special Coating

DIMENSIONAL DATA – ADVERTISING DRAWINGS

GT Series I/P Transducer: A28-16

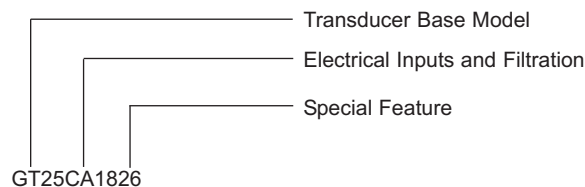


Ordering Sequence — Select desired option for each category

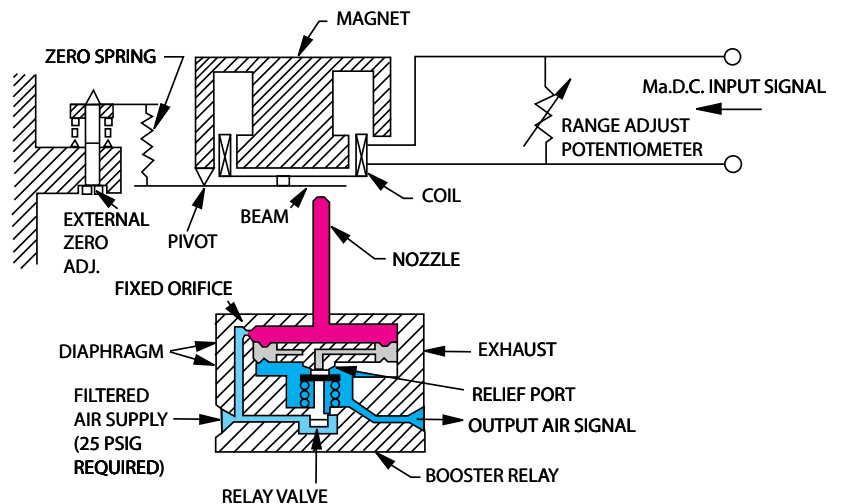
TEXT POSITION 1 through 4	OPTION CODE	DEFINITION OF CHARACTER
	GT25	3-15 PSIG (21-103 kPa)
	GT45	3-27 PSIG (21-186 kPa)
	GT65	6-30 PSIG (41-207 kPa)
ELECTRICAL INPUTS and FILTRATION		
5-6	CA	4-20 mA DC w/ GFH25XT1767F Airpak, Filter-Regulator*
	CD	4-20 mA DC No Filtration or Regulation of Input Pressure
	FA	10-50 mA DC w/ GFH25XT1767F Airpak, Filter-Regulator*
	FD	No Filtration or Regulation of Input Pressure
SPECIAL FEATURRE		
7-10	1826	IEEE Qualified I/P Transducer, IEEE 323-1974, IEEE 344-1975

* Item is shipped loose

Example

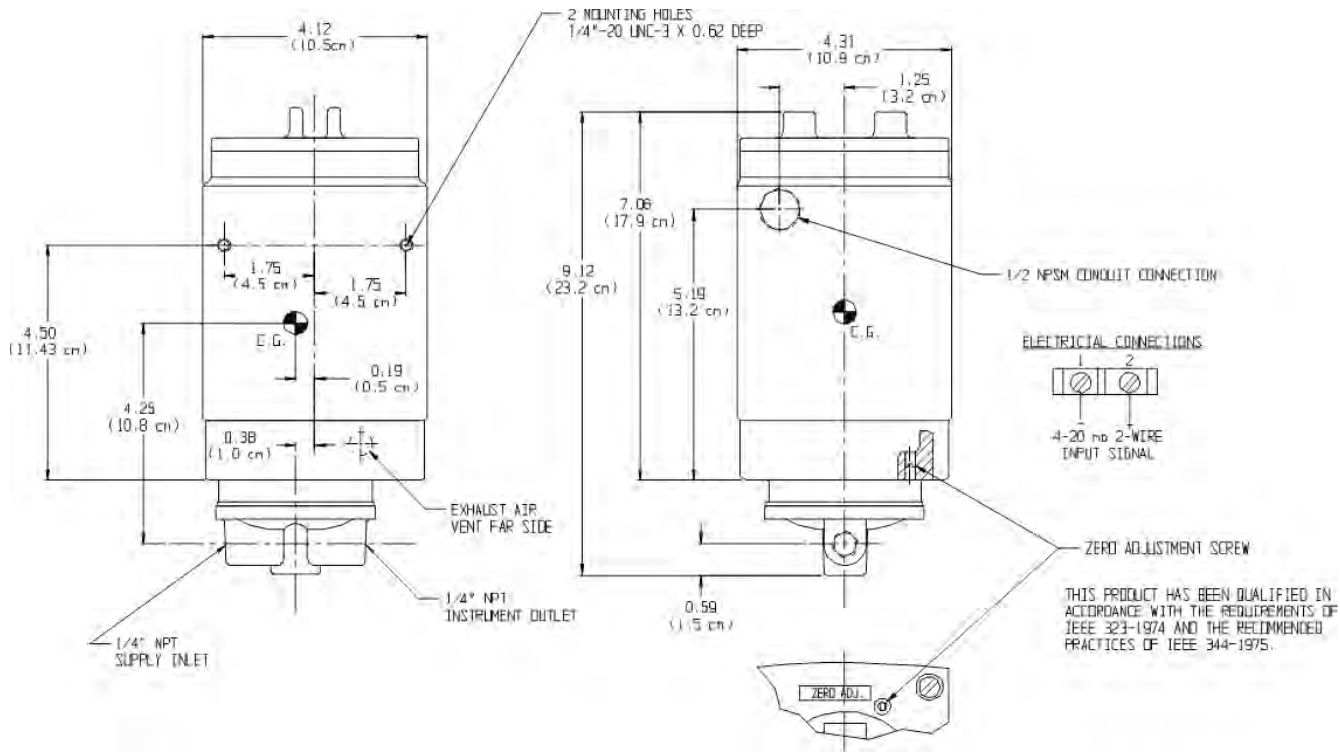


Principle of Operation



Series IEEE Qualified Transducer

Dimensional Views



ENGINEERED FOR LIFE

105 Commerce Way
 Westminster, SC
 Tel. 864.647.9521
 Fax. 864.647.9521
 www.conoflow.com